

THE ALPINE ECHO



THE OFFICIAL NEWSLETTER OF THE BOEING EMPLOYEES ALPINE SOCIETY

"Somewhere between the bottom of the climb and the summit is the answer to the mystery why we climb."

-Greg Child



Photo from Alex Chiu 2023

In This Issue:

- Club announcements
- Club Information
- And more!

THE ALPINE ECHO

A word from your editor:

Hello all,

Another year of BMC and ACC is under way. With it, here's a little release of the Echo that has some club announcements and sections to meet some members of the board. It also highlights the ice climbing seminar that's held every year in Lillooet, BC.

And as a reminder, don't forget to submit your trip reports for the Echo for your chance to win some cool prizes!

Climb on!

-Lexter



2022 Trip Report Contest Winner!

I am happy to announce that by method of a random name drawing, Priti Wright has been selected as the winner of the 2022 trip report contest!

Just as a reminder of how the contest worked: for each trip report that a person was listed as a contributor to, their name was entered into a drawing for a trip report contest. If more than one person contributed to the trip report both people would get one entry into the drawing. The drawing was done on February 18th, 2023 with Priti being the victorious winner!

If you want to read through Priti and Jeff's trip report, check out the [Publications Page](#) on the BOEALPS website. We also had several other great trip reports that you can look through from last year and all Alpine Echo's dating back to 1963!

Make sure to submit your 2023 trip reports to the Alpine Echo for a chance to win this year's Trip Report Contest! Even though the original purpose of getting beta from an Alpine Echo trip report is no longer competitive with the numerous ways one can get trip reports from the internet, we still love seeing what members of the community are up to! We love seeing people grow as climbers and also just getting ideas that are outside of the box! I'd love to see a scattering of diverse trip reports from rock climbing, to hiking/backpacking, to expeditions, to family outings, so we can show our community that no matter where one is at on their climbing/outdoor journey, there is a place in this community where they belong.

Katie Aikens
BOEALPS Vice President

BOEALPS Discord Reminder

The club recently rolled out a BOEALPS Discord server as a new tool to enhance our community collaboration! If you have never used Discord it is very similar to other collaboration tools such as Microsoft TEAMS or Slack. Many members that participated in the Basic Mountaineering Course are already using the BOEALPS Discord with great success. Our hope is that this will provide members more opportunity to join and plan climbs, connect with other members, and generally build our community up as we move more and more toward virtual environments.

Some features you can look forward to using include:

- Subject-based channels and thread to keep conversations organized.
- Voice channels and screen sharing for integrated group trip planning sessions.
- Visibility on member climbing education (BMC Grad, BRC Grad, ACC Grad, etc).
- Direct message ability amongst members.
- Emoji reactions!
- Link sharing for Google photos or drive documents.

Note that the BOEALPS Discord will not be replacing any of our current community communication tools. You can still expect club announcements to be shared officially via email.

You can get access to the BOEALPS Discord Server by clicking the link below. This link will expire after 7 days so if you miss it and want to join at a later point you can email vp@boealps.org to get a new link. To protect the privacy of our members and community you will not automatically receive full access to the community chats. You will have to follow the instructions in the Getting Started channel and allow us to validate your affiliation to the club to gain full access to the server.

Discord Server Invite Link: <https://discord.gg/sJpEVJJU>

THE ALPINE ECHO

MEET THE BOARD

President 2023 - Tony De Roo

Hello BOEALPS Community!

I am Tony De Roo, this is my first time as the BOEALPS club president and I am stoked for another year climbing with the club! I have been with the club since 2019, after I moved here from Connecticut. This community never ceases to amaze me because of the wealth of knowledge, friendliness, and the willingness and enthusiasm in teaching others the skills to safely recreate in the mountains.

My climbing “career” didn’t start with BOEALPS, a coworker introduced me to climbing in 2015 by taking me to a local crag. Soon I was hooked on climbing, this progressed to the same group of people doing winter climbs/hikes in the White Mountains, NH and surrounding areas. During a trip to Alaska in 2018 was the first time I saw massive snowcapped mountains in person. It was awe inspiring. I eventually made plans to move to Washington state to join Boeing.



The first involvement I had with BOEALPS was the 2019 WFA course, then promptly signed up for the 2020 BMC course followed by instructing BMC and the Marketing Chair in 2022. As many of us know the 2020 BMC was canceled. Unwilling to let that deter me from learning mountaineering skills, a small group of past year instructors and current students got together to do our own training sessions. Slowly the mountains became more attainable as my skill set grew. Little did I know at the beginning of 2020 that I would be climbing Mt. Baker, Mt. Rainier, Mt. Olympus, Glacier Peak, and numerous other peaks.

It's hard to choose a favorite climb, however, a very memorable one was the Ingalls via the South Ridge Ski/Alpine climb. After gathering copious amounts of recent beta we were confident the snow started about ¼ mile from the trailhead... little did we know that was a lie. With skis on our backs and trees and bushes mysteriously in the “trail”, we finally found snow after 45 minutes of character building. We were happy to start skinning. We could see as we approached the base of the route that the first pitch was covered in a precarious snow finger; we debated between booting up that and looking for another way up. At the notch a route around the back of the rock fin had a slab that

...continue to next page

THE ALPINE ECHO

MEET THE BOARD



looked promising. This was the correct choice, later that day we saw the entire snow finger collapse forming a large debris pile below. It makes you think, “wow, we could have been climbing up that when it collapsed”, it’s these experiences that send home the importance of conservative decision making in the backcountry.

We proceeded to climb the next 4 pitches switching off leads then successfully summiting, with only mild shenanigans getting down a 70 meter rappel with a 60 meter rope. Resulting in some webbing and cams as a mid rappel station then removing the cams and leaving the webbing on the rock horn for the final person to rappel. At the notch we put our skis back. I was determined to ski as much of this as possible, ending on a small patch of snow in the woods just before the main trail. We did get some funny looks from other people on the trail, who noted the significant lack of snow at that elevation.

I am looking forward to another year climbing with this awesome community and having the opportunity to give back in my capacity as president. If you have any concerns or suggestions on how the club operates, suggestions for the curriculum or best practices, please don’t hesitate to contact me or other board members. I hope to see you out on a climb!



THE ALPINE ECHO

MEET THE BOARD

Vice President 2023 - Katie Aikens

Hi BOEALPS Community! I am returning again as the 2023 BOEALPS VP. I grew up in Alaska where the mountains always beckoned, however I didn't find the love of mountaineering until I moved to Seattle in 2018 and joined BOEALPS. I think what drew me to BOEALPS and the Basic Mountaineering Class (that I took in 2019) was the challenge of it all. I have always had a desire to push myself to my limits and I think it's really true that to be a mountaineer you actually do have to enjoy suffering at least a little bit! But even with my desire to push myself I'm not sure I would



have been able to stick with it if it hadn't been for the amazing community that BOEALPS provides. I am constantly in awe of the people in this club and their selfless willingness to give, teach, and help others grow. It has inspired me to also try to give back as much as I can to the club and its members.

Since joining BOEALPS I have done so much more than I ever would have thought myself capable of! Last year, for this introduction, I wrote about my climb of Mount Hood in 2021. And while that is still one of my favorite climbs I have ever done, this year I want to write about my climb of Mount Shuksan in 2022. Mount Shuksan was a significant climb for me, because it really showed me just how far I had come in my climbing. Just a year earlier, doing a trip like that

would have really pushed my limits. I would have been very anxious and stressed about the climb because I was still learning and didn't have a ton of confidence. But instead it ended up being just a generally enjoyable low stress trip! (Although still physically challenging)

We started around 2 am in early June after sleeping for a few hours at a campground not far from the trailhead. The road was blocked by some fallen trees and big ruts about a mile from the actual trailhead so we had to walk that little bit extra just to get to the trailhead itself. The hours from 2 am to dawn



...continue to next page

THE ALPINE ECHO

MEET THE BOARD

went by very quickly and were spent mostly meandering through the woods following faint snowshoe tracks from a party that had gone up the day before. By the time we broke through the trees the sun had risen and a very slight sprinkle had started, although it didn't last long.

The group that we had followed their footsteps from the day before had set up camp just before the Sulphide glacier and once we no longer had their tracks we had to put on snowshoes to avoid wallowing in the fresh snow. The path across the glacier was mostly just a snow slog to the bottom of the summit block but the views were incredible and there was no one else out there save a few skiers that were making their way up behind us.

The summit block was completely snow covered and the snow was perfect for kicking steps. We unroped and kick stepped our way up to the summit! It was thrilling to be on such a steep face of snow but still feel very secure. Just as we got to the top (around 11 am) the clouds started coming in, we had made it just in the nick of time to avoid being in white out conditions.

By the time we were heading down the snow on the glacier had gotten very soft and even with snowshoes we were swimming in it. We had several feet of soft slushy snow and were setting off lots of mini wet slides as we made our way down. The rest of the way out, once we got off the glacier was mostly an uneventful slog, I did not remember walking that far on the way up! But we made it back to the cars around 5 pm all still in one piece but very tired.

THE ALPINE ECHO

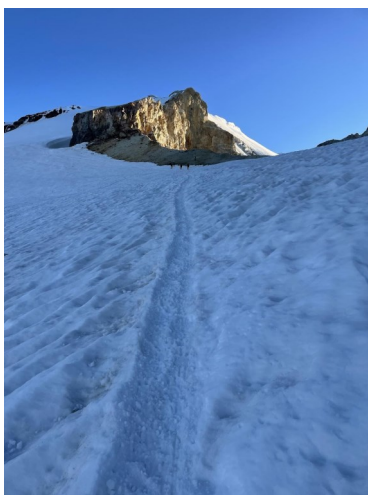
MEET THE BOARD

Secretary 2023 - Hannah Horton

Hi, I'm Hannah and this will be my first year as Secretary for BOEALPS! I first found myself in the mountains in Shenandoah National Park in Virginia during a college internship. Since then, I knew I needed to move to a place with them in abundance! Luckily I got a job at Boeing and started exploring Washington. I tried to take BMC in 2020 and was disappointed when it didn't work out due to the pandemic. During the years off I continued learning snow and rock climbing skills to improve my outdoor abilities. Finally in 2022, I completed BMC and did my first glacier climbs. At the end of the class, I volunteered to help with club



events and my involvement grew from there. I wanted to give back to the organization that taught me so much. Since becoming a member of BOEALPS, I have taken BMC, WFA, and AIARE courses. I am also returning to BMC this year as an instructor!



Before BMC, the idea of climbing a volcano was a bit daunting. For one, you must have the physical and mental fitness. Taking BMC definitely improved my overall skills, and by the end of class I had the confidence to organize my own climbs. Kulshan (Mt Baker) was one of my favorite climbs last year. I thought it'd be a perfect intro to organizing my own trip. So I reached out to some of my old BMC teammates and friends and got a team together. We used our trip planning skills from BMC to plan the route, teams, and equipment. We began our trip at the Park Butte Trailhead and made our way up railroad grade to camp for the night. We practiced crevasse rescue a few times, ate a big dinner, and tried to get some sleep.

We woke up for a 4am alpine start. We followed the headlamps up the rest of railroad grade until we dropped onto the Easton Glacier. Quickly we were met with multiple crevasses in a row, luckily all them were no more than a foot wide and required a small step over. For the rest of the climb we only encountered one other major crevasse that was opening on a very short steep section. We had to use the lip almost like a step. Then we headed toward Sherman Peak. We have heard about this rock formation dropping rocks or boulders onto the climbing path occasionally so we kept an

...continue to next page

THE ALPINE ECHO

MEET THE BOARD

eye on it. Once we reached the Sherman crater, we were able to take a break on solid ground (even though it was more like mushy dirt).



The next section is the Roman Wall, the steepest part of the climb. The bergschrund that commonly forms in the transition from the crater to the wall was not exposed so we easily began following the switchbacks set into the face by fellow climbers. A bit later we had a successful summit! The best part of climbing Kulshan was being able to relax on the summit since it's a flat area with little glacier danger, one of our team members even took a nap. On the descent, we followed the same path. Some of the crevasses had opened up a bit since the morning as it was a warm sunny day.

Everybody patiently waited for each rope team member to step down or jump over the largest ones we encountered. Eventually we returned to camp at railroad grade and then back to the trailhead. I will always appreciate the team and experience.

Treasurer 2023 - Chris Rinauto



Hi there! I'm Chris Rinauto, your Treasurer for 2023.

I've lived in the Seattle area and worked as an engineer at Boeing since 2011 when I moved here from Upstate NY. I got into hiking in the Cascades right away, and over time that desire to spend more time in the mountains slowly snowballed to me taking BCC (now BMC) in 2018. While I regretted waiting so long to seriously get into mountaineering, I ended up with the greatest team of instructors and fellow students in the history of the club: Team SOS. It was such an amazing experience I was compelled to come back and instruct BMC the next year in 2019. I was also fortunate to take BRC that year, and after two long years of waiting I took ACC last year. I also served as Treasurer last year as well.

As the club has provided me with so many opportunities to learn and grow in climbing, I want to give back as Treasurer to help ensure that the club remains financially healthy and able to continue to provide those opportunities to current members and new climbers alike.

Please don't hesitate to reach out if you have any feedback on how the club operates or if you're interested in running for a board position next year!

See you out there,

Chris Rinauto

treasurer@boealps.org

Waterfall Ice Climbing Seminar Feb. 25-26 2023

By: Alex Chiu

Back by popular demand, BOEALPS hosted the waterfall ice-climbing seminar, which was last held in February 2020. The waterfall ice seminar is normally held in Lillooet, BC every winter, the small mining town, is a hidden gem in terms of waterfall ice climbing. The weather gods answered our prayers and a cold front brought temperatures below freezing, ensuring everyone will be climbing safer waterfall ice.



All students who attend the seminar have to have BMC or equivalent experience. To put on a seminar of this magnitude I needed some of the best instructors BOEALPS has to offer and I was very lucky to get some of the best alpinist in the Pacific Northwest. Jeff and Priti Wright who need no introduction, Nick Roy and Igor who have climbed countless peaks in cascades. I first attended the waterfall ice climbing seminar in the winter of 2017, it was one of the most amazing and terrifying experiences I ever had in the mountains. Amazing because I had never seen or even imagined I

could climb waterfall ice and terrifying because I had no clue what I was doing. That experience set me on a course towards new adventures, I would attend various ice climbing festivals and climb every peak that had even a little bit of ice on it, in the PNW. I first lead the ice seminar in Feb. 2020 and when I was asked to lead it again this year, I jumped at the chance!



Day 1: Rambles Left (Water Ice 2 ie WI2) with me, Igor and Nick, and Rambles Center (WI3) with Jeff and Priti

We split the students into groups of six because of the amount of space in each area; the instructors gave demos on the tools we would be using. The club in 2020 had just bought three new sets of tools for the ice seminars. Instructors set up top ropes in each area by leading the climbs and setting up anchors. By the end of the day students were getting more comfortable swinging tools and trusting their crampons primary and secondary points

...continue to next page

THE ALPINE ECHO

CLUB ACTIVITIES



would stick to the ice. Demos were also given to both groups on how to make V-threads to rappel off of and build Ice screw anchors. Like I told all the students, they would be drinking from the firehose this weekend but we had some of the best instructors teaching them!

Dinner that night was in the Lillooet Cookhouse, it is one of the few restaurants in town that could accommodate such a huge party. Everyone enjoyed dinner and got some rest for the next day!

Day 2: Marble Canyon the waterfall in the center Deeping Wall WI 5 and the one on the right Icy-BC WI4



In previous years, we would drop top ropes from the waterfall atop marble canyon but this year because of the strength of our instructors: Igor, Priti, Jeff, and Nick all lead up 30 meters to setup top rope for all the students. This was a great demo for all our students on how to lead an ice climb but also demonstrate the techniques you use in climbing ice repeatedly. The A-frame, hanging on your tools, placing screws, ice climbing is not like rock climbing, rock climbing you use the holds while on ice you make your own holds. It was amazing to see all the students' progress so quickly, every time I looked around I saw another student topping out on their ice climb, these were not easy climbs either. The students used the techniques we taught all weekend and it showed as they all progressed and reached heights I'm sure they never expected when they first signed up for this seminar.



Students also got a lot of good practice using ice screws, when they practice making a v-thread.

Thank You again to all the instructors: Priti, Jeff, Igor and Nick

Thank You to Sarah Campell for letting us use the BMC ropes for

the Seminar

...continue to next page

THE ALPINE ECHO

CLUB ACTIVITIES

Thank You to the BOEALPS board for entrusting me with leading this seminar, each year we just get better, students and instructors.



...continue to next page

THE ALPINE ECHO

CLUB ACTIVITIES



Look at the smiles who's having the best time of their life!

Students: Thomas Berlemann; Christian Canham; Jenny Smith; Madison Kearschner; Nima Forghani; Rylee Lewis; Sarae Ang; Vivian Godoy; Isai Ake; Roberto Garcia; Ignacio

Instructors: Priti Wright; Jeff Wright; Nick Roy; Igor; Alex Chiu

Membership - New or Renew?

If you are (or were) a Boeing employee or someone in your immediate family is, consider supporting BOEALPS by becoming a member or renewing your membership this year!

Signing up for membership helps us raise the funds we need to keep supporting the great activities and events you enjoy throughout the year. The membership also gives you access to negotiated discounts at several Seattle-area stores, and other benefits - including borrowing gear (see details at <http://boealps.org/members/gear-locker>)

The 2023 BOEALPS membership form - as well as a list of membership benefits - are available on the website at <http://boealps.org/members>.

If you have any questions about membership, contact us at membership@boealps.org

Safe and happy climbing!

You also get a really cool membership card!



THE ALPINE ECHO

MEMBERSHIP

Online forms can be found at: <http://boealps.org/members/>

MEMBERSHIP RATES:

- Individual Member / Associate: \$30
- Individual Retiree: \$25
- Family Membership: \$35

BENEFITS INCLUDE:

- Subscribe to the Club Mailing List at <http://boealps.org/publications/ mailing-list/>
- The Basic Mountaineering Class (BMC) offered each spring is a fantastic, fun way to learn safe climbing or a great opportunity for graduates to volunteer as an instructor.
- The Basic Rock Class (BRC) offered each summer helps you hone your rock skills.
- The Alpine Climbing Class (ACC) is also offered each spring. Protection, leading, ice climbing, aid climbing taught with a great instructor/student ratio and an emphasis on safety.
- The Wilderness First Aid (WFA) certification courses are available to teach you how to respond to an emergency in the backcountry.
- General meetings and social activities throughout the year such as campouts, picnics, photo contests, and organized climbs.
- A winter and summer climbing series to keep the blood flowing.
- Seminars on rock climbing, leading, ice climbing, avalanche awareness, backcountry skiing, etc. are offered as a great way to continue learning throughout the year.
- A quarterly newsletter "The Alpine Echo," featuring the club calendar, events, activities, trip reports, outdoor topics, and more.
- Great exercise with wonderful people in the beautiful Cascades and beyond!

DISCOUNTS:

- Feathered Friends: 10% discount
- Outdoor Research: Selected discounts.
- Pro Mountain Sports: Selected discounts.
- Mountain Hardwear: 15% discount.
- Mazama Lodge: Affiliate pricing.

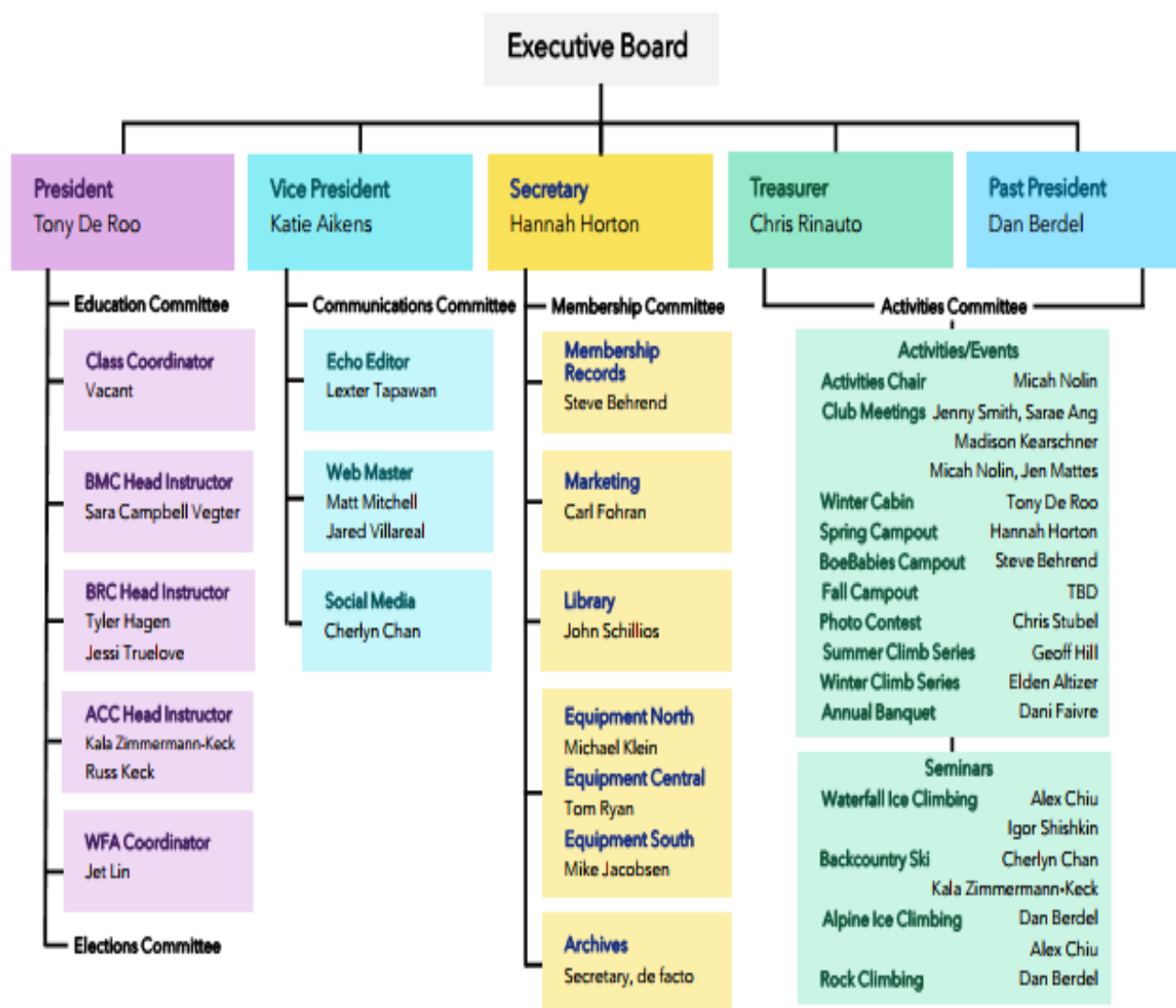
****NOTE:** A valid BOEALPS membership card is required at the time of purchase!!

MORE INFORMATION:

More information on the membership types as well as club documents including PRO-99, BOEALPS Constitution and Bylaws, and BOEALPS Operating Procedures can be found online at <http://boealps.org/members>

THE ALPINE ECHO

EXECUTIVE BOARD TREE



THE ALPINE ECHO

ORG CHART

EXECUTIVE BOARD

President	Tony De Roo	exec-board@boealps.org
Vice President	Katie Aikens	president@boealps.org
Secretary	Hannah Horton	vp@boealps.org
Treasurer	Chris Rinauto	secretary@boealps.org
Past President	Dan Berdel	treasurer@boealps.org
		past-president@boealps.org

MEMBERSHIP

Membership	Steven Behrend	membershiup@boealps.org
Marketing	Carl Fohran	marketing@boealps.org
Library	John Schillios	
South	Mike Jacobsen	equipment-renton@boealps.org
Central	Thomas Ryan	equipment-seattle@boealps.org
North	Michael Klein	equipment-everett@boealps.org

ACTIVITIES

Summer Climb Series	Geoff Hill	scs@boealps.org
Winter Climb Series	Elden Altizer	wcs@boealps.org
Winter Cabin	Tony De Roo	
Spring Campout	Hannah Horton	
BoeBabies Campout	Steve Behrend	
Fall Campout	TBD	
Photo Contest	Chris Stubel	

EDUCATION

Class Coordinator	VACANT	education@boealps.org
BMC Head Instructor	Sara Campbell Vegter	BMC@boealps.org
BRC Head Instructor	Tyler Hagan/Jessi Truelove	BRC@boealps.org
ACC Head Instructor	Kala Zimmermann-Keck/Russell Keck	ACC@boealps.org
WFA Head Instructor	Jet Lin	wfa@boealps.org

COMMUNICATIONS

Web Master	Matt Mitchell/Jared Villareal	webmaster@boealps.org
Social Media	Cherlyn Chan	www.facebook/boealps
Echo Editor	Lexter Tapawan	echo-editor@boealps.org